

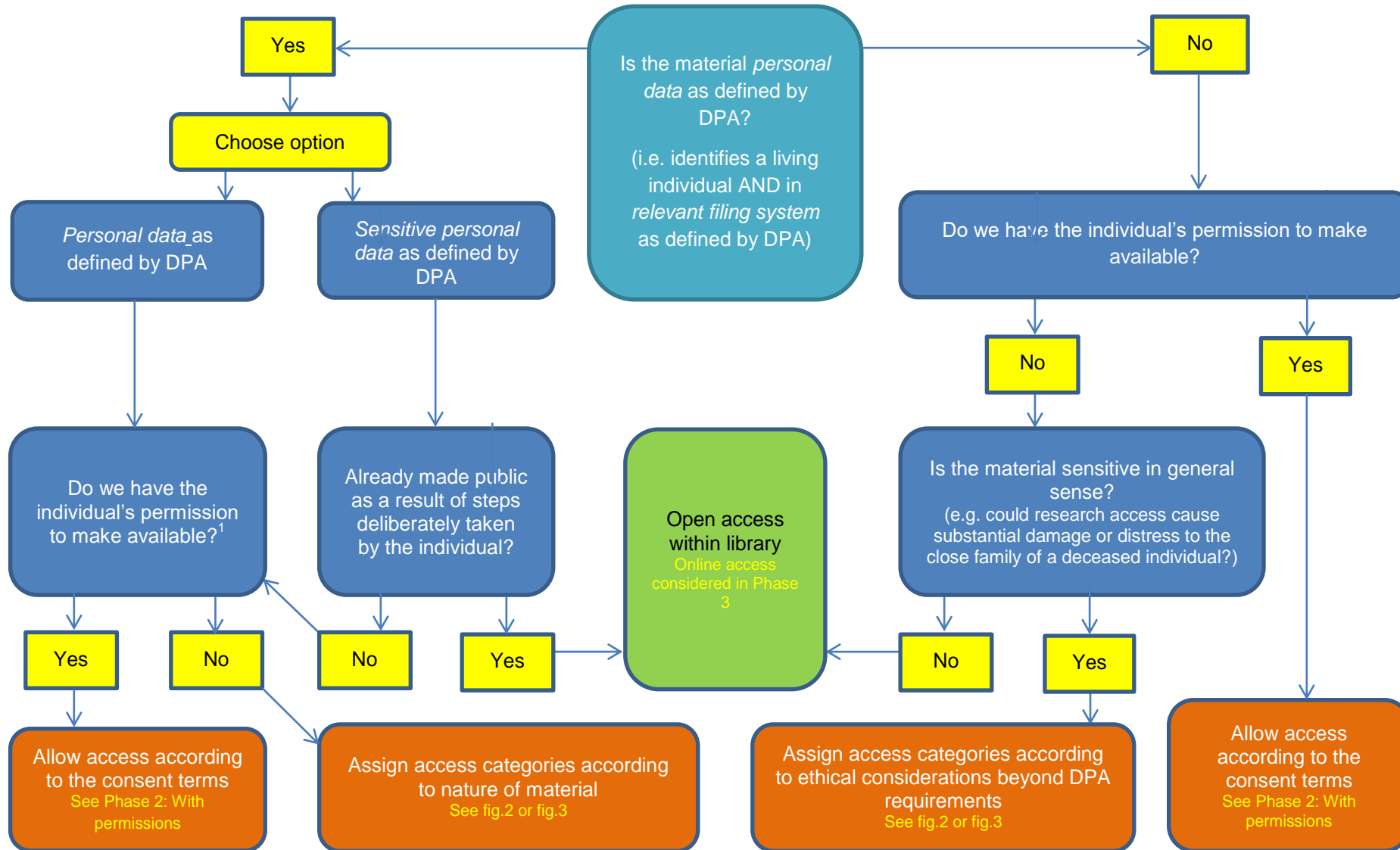


Sensitivity in an era of Open Science

Reviewing Wellcome's policy and procedures on access

Jenny Shaw & Alexandra Eveleigh, Wellcome Collection

Current policy 2014



Subject to any applicable copyright or other restrictions (e.g. taste and decency)

¹We take steps prior to acquiring material within our research collections to verify that where consent has not been obtained, this is not due to the relevant individual's refusal to consent.

How did we get to here?

Wellcome Collection is a
free museum and library
exploring health, life and
our place in the world



Review 2017 – 2018

Open Access Policy



The
**Open
Science**
Prize



Wellcome Open Research
<https://wellcomeopenresearch.org/>



Wellcome Open Research

A new way for Wellcome-funded researchers to rapidly
publish any results they think are worth sharing.

[SUBMIT YOUR RESEARCH](#)

Corporate Confidentiality

Series title	Description	Dates	No. reviewed	Access status	Reason
Sir Henry Wellcome's will and bequests	Files regarding the will and the bequests the Trustees were responsible for administering.	1910-c.1958	5/5	Open (need permission to waive legal privilege)	No sensitive data given the age of the records
Board of Trustees and Board of Governors minutes	Bound minute books and some loose minutes	1937-2011	25/51	To be discussed	
Board of Trustees and Board of Governors papers	Agendas, minutes and discussion papers	1965-2012	40/468	To be discussed	
Trustees files	Correspondence files for individual trustees. Mainly regarding their appointment and Board matters	1939-1969	9/9	Open	No sensitive data. All deceased.
Trustee administration	Correspondence with and from the Board Secretary and Scientific Secretary	1910-1968	4/4	Open	No sensitive data given the age of the records
Chairman's office: Sir David Steel	Finance papers, correspondence with Foundation, papers on Trust salaries and Trust Director position	c.1980-1989	7/7	2 files closed for 60 yrs 1 file restricted for 60 yrs	Salary info Professional data
Chairman's office: Sir Roger Gibbs	Papers about his appointment as Chair, correspondence with Foundation, correspondence about Trust matters and between Gibbs and Steel	1982-1989	3/3	1 file restricted for 60 yrs. Others open	Incidental inclusion of professional personal data
Director's office: Mike Dexter	Papers about appointing Sanger Institute Director, several files about setting up Diamond Synchrotron and deciding on its location	1997-2001	10/10	To be discussed	
Director's funding briefings	Regular meetings to keep the Director informed of work going on in the Trust as well as key external issues. Papers for discussion along with background papers and correspondence	2000-2004	4/18	To be discussed	
First Trust funding policy	Files regarding the first "Trust Policy" with background papers on awards and areas of funding	1955-1968	3/3	Open	No sensitive data.
"The Grand Design"	Files regarding Foundation's plan for the Trust to sell Foundation shares. Trustees in the end declined.	1961-1964	3/3	Open (need permission to waive legal privilege)	No sensitive data, given the Trust later did sell shares
European medical research organisations	Research files re. work of European medical research organisations and systems of medical education	1970-1973	20/28	Open	Collated published material and non-sensitive correspondence
Board of Management meeting minutes and papers	Precursor to Executive Board: managed the Trust's day-to-day activities	1989-1998	37/107	To be discussed	
Audit Committee meeting minutes and papers	Meeting attended by internal and external auditors and some Trust staff	1997-2004	12/18	To be discussed	

EU General Data Protection Regulation (GDPR)

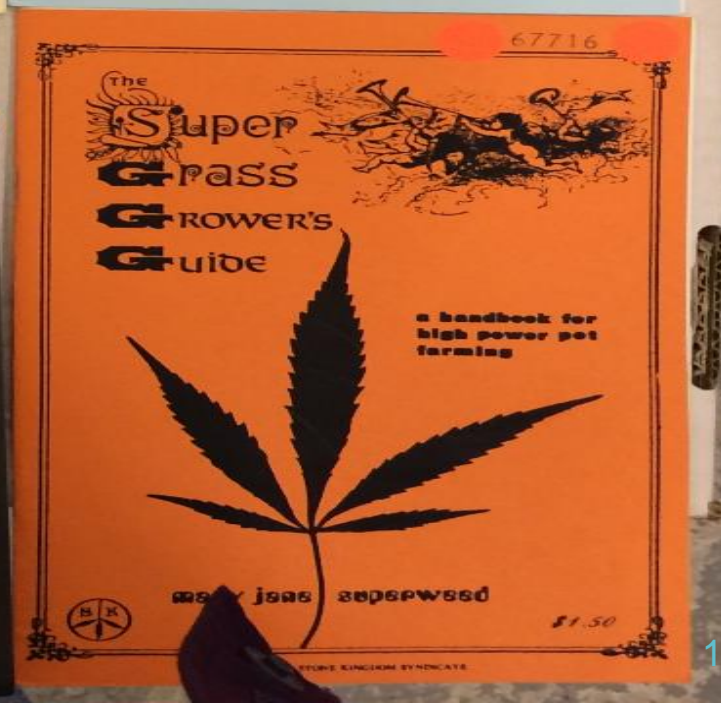
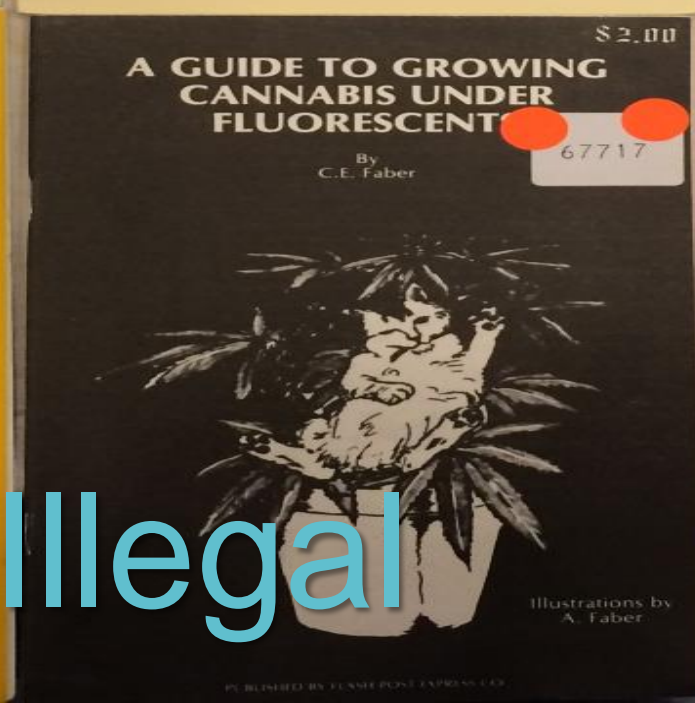
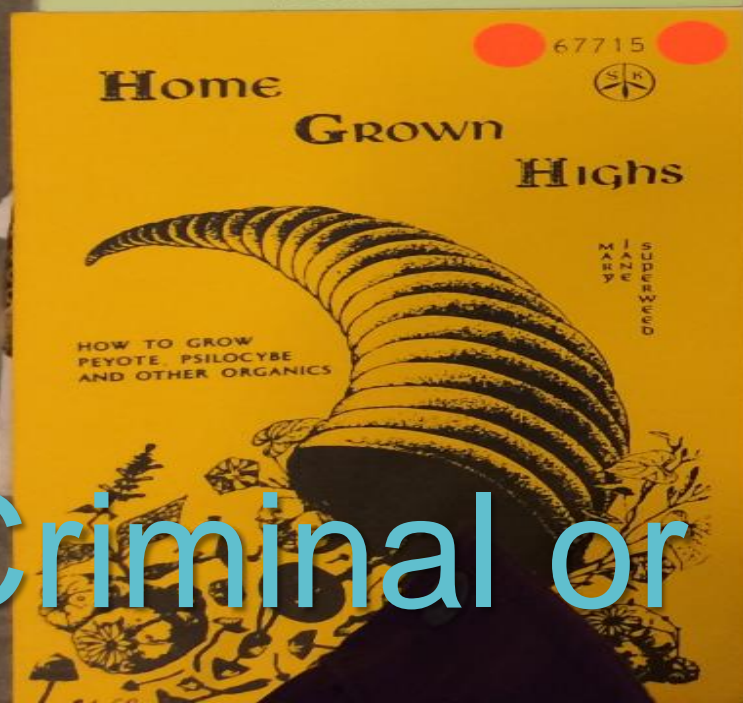
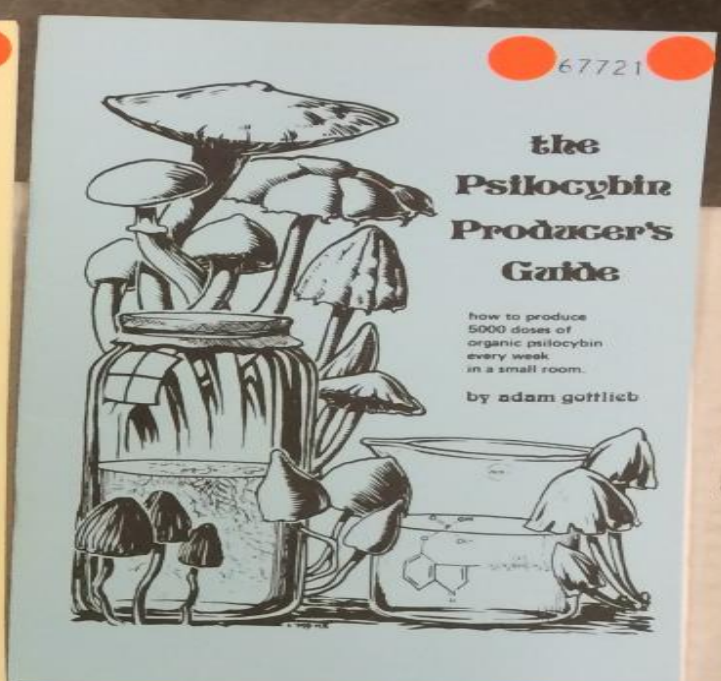
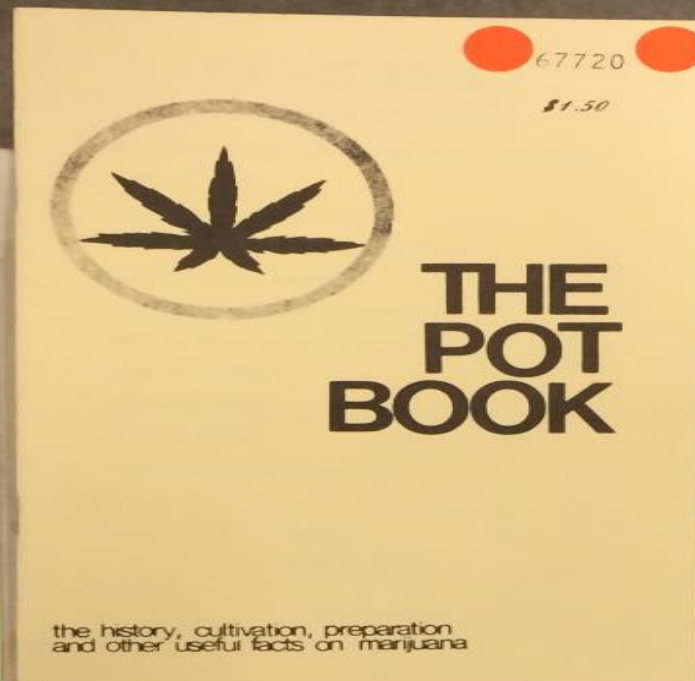
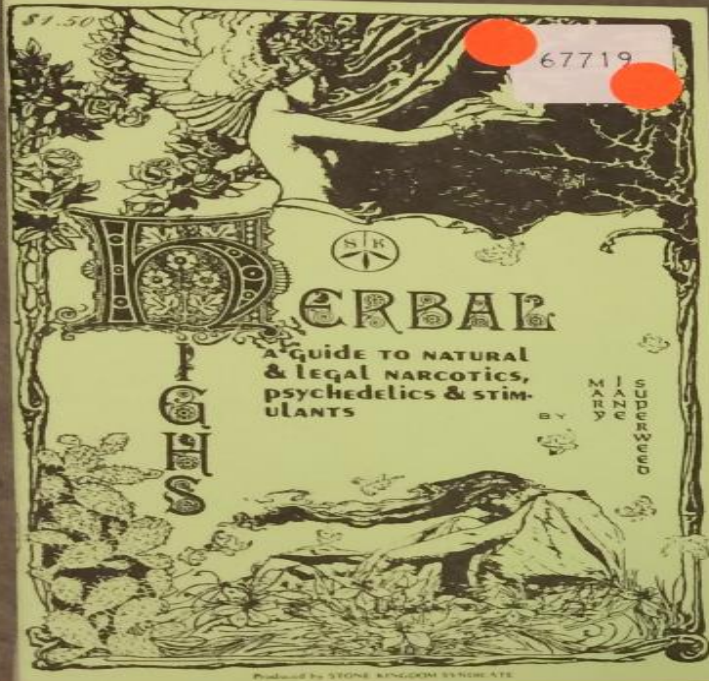
The background of the slide is a photograph of a surgical team in an operating room. Several surgeons in blue scrubs and masks are visible, focused on a patient. The scene is brightly lit, typical of a clinical environment.

The Kodak Medical Film Library is intended only for circulation within the limits of the Medical Profession...

They will not be exhibited to any persons other than qualified medical men and registered medical students...

Non-compliance with this stipulation will be regarded as a serious breach of medical etiquette

Clinical & distressing content



Criminal or Illegal



Cultural Sensitivity

Scalability & Digital Access



Access Decisions



Open Minded, Art of the Brain

Sarah Grice, 2012



Thank you

je.shaw@wellcome.ac.uk
a.eveleigh@wellcome.ac.uk